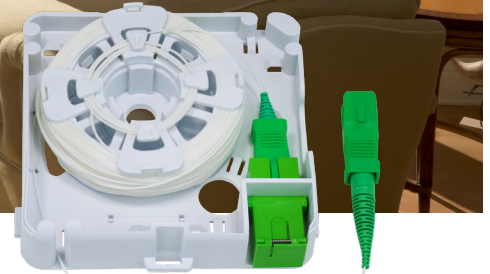


INSTALLING INVISILIGHT® ILU IN A DIY (DO IT YOURSELF) INSTALLATION

It's Easy to Run Fiber in the Home –
Even with No Experience!



Dr. Barry Charnick is busy. As a Florida radiologist and medical director for a multi-location imaging institute, his days (and sometimes nights) are filled with ultra high resolution images from some of today's most advanced imaging equipment. With the datafile of a single PET/CT scan consisting of hundreds of megabytes (MB) to multiple gigabytes (GB) in size, bandwidth availability is critical in the office and at home. The stakes are higher when it's not just cute cat videos being transmitted, and wifi just isn't fast enough. Dr. Charnick has a fiber connection to his home and has developed his own in-home network.

Just the implementation of fiber vs Category 6 copper in the network stack resulted in an immediate noticeable network improvement, and he recognized that a fiber network extension into a different room was needed for additional flexibility/convenience. The fiber network extension enabled gigabit transmission today with an easy upgrade path to 10 Gbps down the road.

After researching fiber extension technology, Dr. Charnick approached OFS to provide some assistance with providing a low visibility fiber network in his home. OFS provided the InvisiLight ILU (Indoor Living Unit)

solution, 600 micron version for roughly a 50-60 foot path, including two wall penetrations, from a media converter with single-fiber SFP in his home network stack to a separate room. Even though the route wasn't that long, there were a total of ten 90 degree turns along the pathway. That number of turns made Dr. Charnick nervous since "Those 90 degree turns were on my mind as the end user. Most people see fiber coming into the home and the general perception is that fiber 'can't' bend, especially multiple right angles," without significant optical losses or installation difficulties.

However, that nervousness didn't last long.

The installation took 20 minutes. Dr. Charnick's feedback was that it was "it was 'easy' even for the first time". He also mentioned that the 20 minute fiber installation time saved a tremendous amount of additional time and expense by avoiding cutting holes in walls, patching, and painting. He summed up the positive experience with the InvisiLight ILU Solution with the following, "You and your product made me comfortable to proceed and having seen it in person, I understand why."

All photos courtesy of Dr. Barry Charnick.



FIGURE 1: InvisiLight module location behind a dresser.



FIGURE 2: Close-up of InvisiLight Cord through wall grommet.



FIGURE 3: InvisiLight adhesive installation on top of door frame.

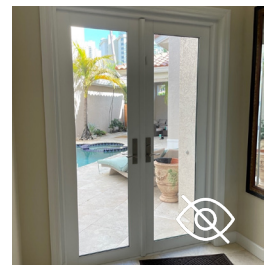


FIGURE 4: InvisiLight installation around door.