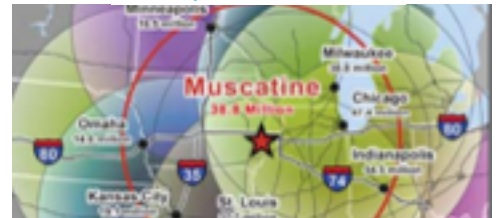




# INVISILIGHT® CASE STUDY

## WHO

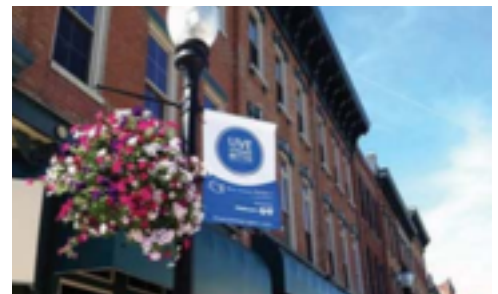
MP&W is a municipal utility providing water, electric, and communications services to the City of Muscatine and surrounding areas located along the Mississippi River in Iowa. MP&W has provided communications services since the late 1990s, and fiber-based services beginning 2017. The City of Muscatine has a population of approximately 24,000 people, and the county population is approximately 43,000.



## WHY

Strategically located on the mighty Mississippi river, Muscatine has many grand old buildings with distinctive architectural features.

Serving these buildings with fiber services with minimal aesthetic impact and building disruption was important to MP&W and its customers. MP&W was also focused on installing a reliable network with long-term future viability.

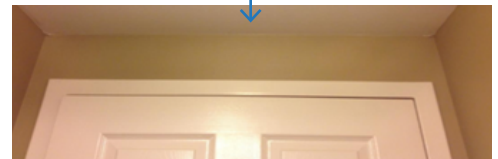


## HOW

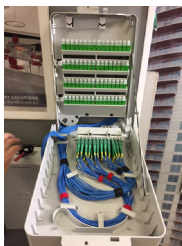
After an evaluation of available solutions, MP&W chose InvisiLight MDU (Multi-Dwelling Unit) and InvisiLight ILU (In Living Unit) product sets from OFS.

After initial discussions and installation support visit from OFS for the first building, MP&W has standardized on these products and routinely uses them to build out MDU buildings in their service area, much to the delight of their customers.

Not Seeing is Believing  
Fiber at ceiling edge above door



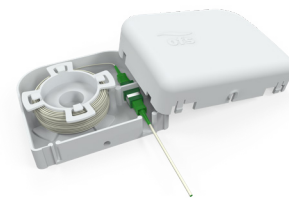
## OFS SOLUTIONS USED



SlimBox® 64-Fiber Distribution Hub and DirectConnect Splitters (in Telecom Closet)



InvisiLight® MDU Cord and Compact Point of Entry Modules (in Risers and Hallways)



InvisiLight® ILU Solution (in Living Units)